

**Conway 316 Gripper Bar**  
can be used in these Die Cutters:

**Bobst SP 1420 E/ER**  
**Series 8-10**

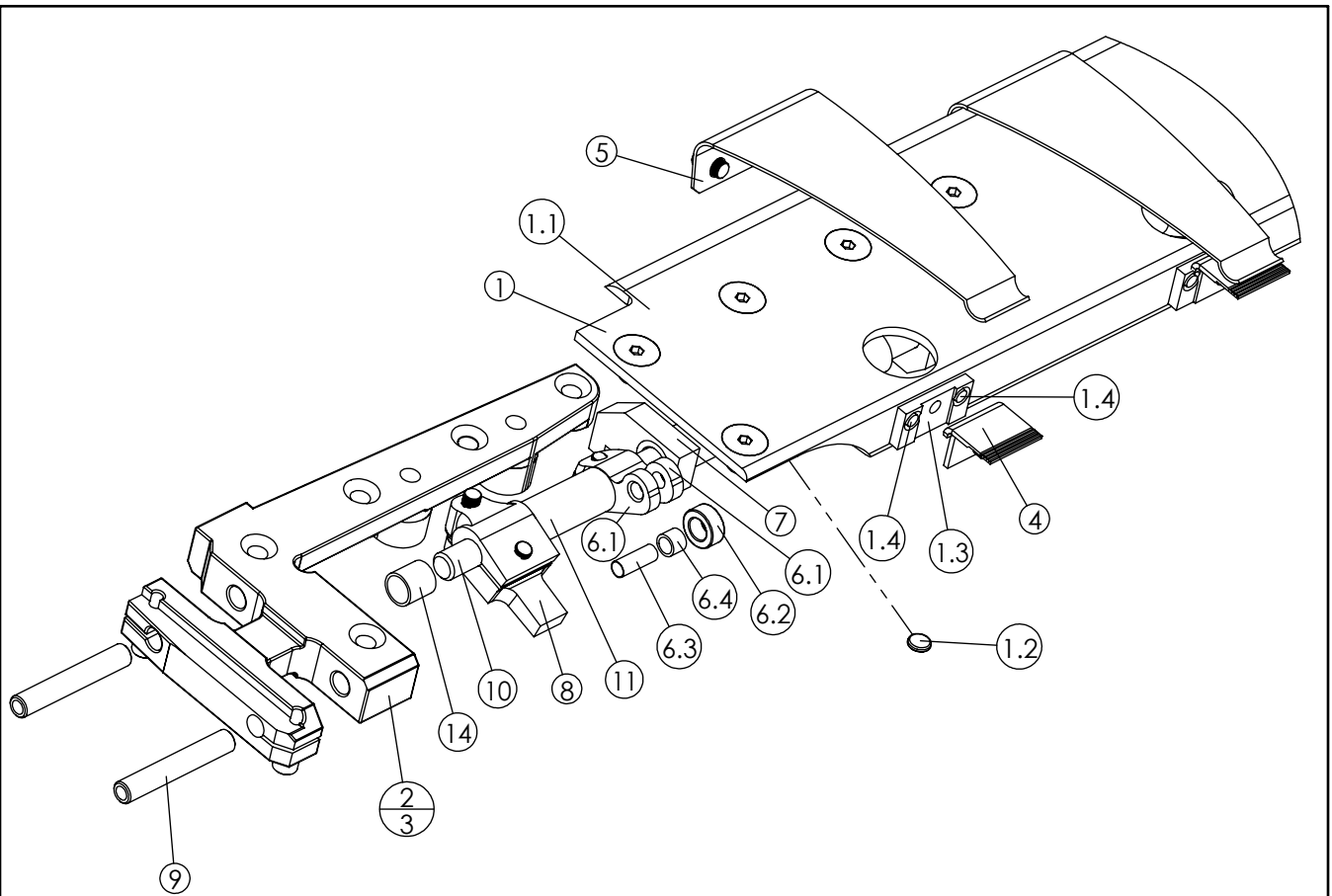
**CMI PART#**  
**10-316-1-00-00**

**Interchangeable with**  
**Bobst Part#**  
**BSA05700000KQ**



**Proudly Manufactured by:**





**Conway 316 Gripper Bar  
will fit these Die Cutters:**

**Bobst SP 1420 E/ER  
Series 8-10**

**Bobst Part#  
BSA0570000KQ**

Item No.	Qty	CMI Part No.	Description	OEM Part No
	1	10-316-1-00-00	Gripper Bar Complete	BSA05700000KQ
1	1	10-316-0-01-01	Shell (Assembly)	BSA05700000RH
1.1	1	10-316-0-01-02	-Shell	
1.2	2	10-316-0-01-03	-Wear Pad	
1.3	10	10-316-0-01-04	-Mounting Plate	
1.4	20	10-316-0-01-05	-Rivet	
2	1	10-316-1-02-00	End Fitting O.S.	
3	1	10-316-1-03-00	End Fitting O.O.S.	
4	10	10-316-0-16-00	Stationary Gripper	BSA0570104100
5	10	10-316-0-15-00	Movable Gripper	BSA1019013800
6	10	10-316-0-24-01	Lifter (Assembly)	
6.1	1	10-316-0-24-02	-Lifter	
6.2	1	10-316-0-24-03	-Roller	
6.3	1	10-316-0-24-04	-Pin	
6.4	1	05-000-1-06-06	-Bushing	
7	10	10-316-0-31-00	Shaft Support Bushing	
8	2	10-316-0-25-00	Lever	
9	4	10-316-0-14-00	Axle, 8mm	BSA1109800802
10	1	10-316-0-27-00	Shaft	
11	2	10-316-0-28-00	Shaft Spacer (Short)	
12	8	10-316-1-28-00	Shaft Spacer (Medium)	
13	1	10-316-2-28-00	Shaft Spacer (Long)	
14	2	05-000-1-10-12	Bushing	BSA1111023500

